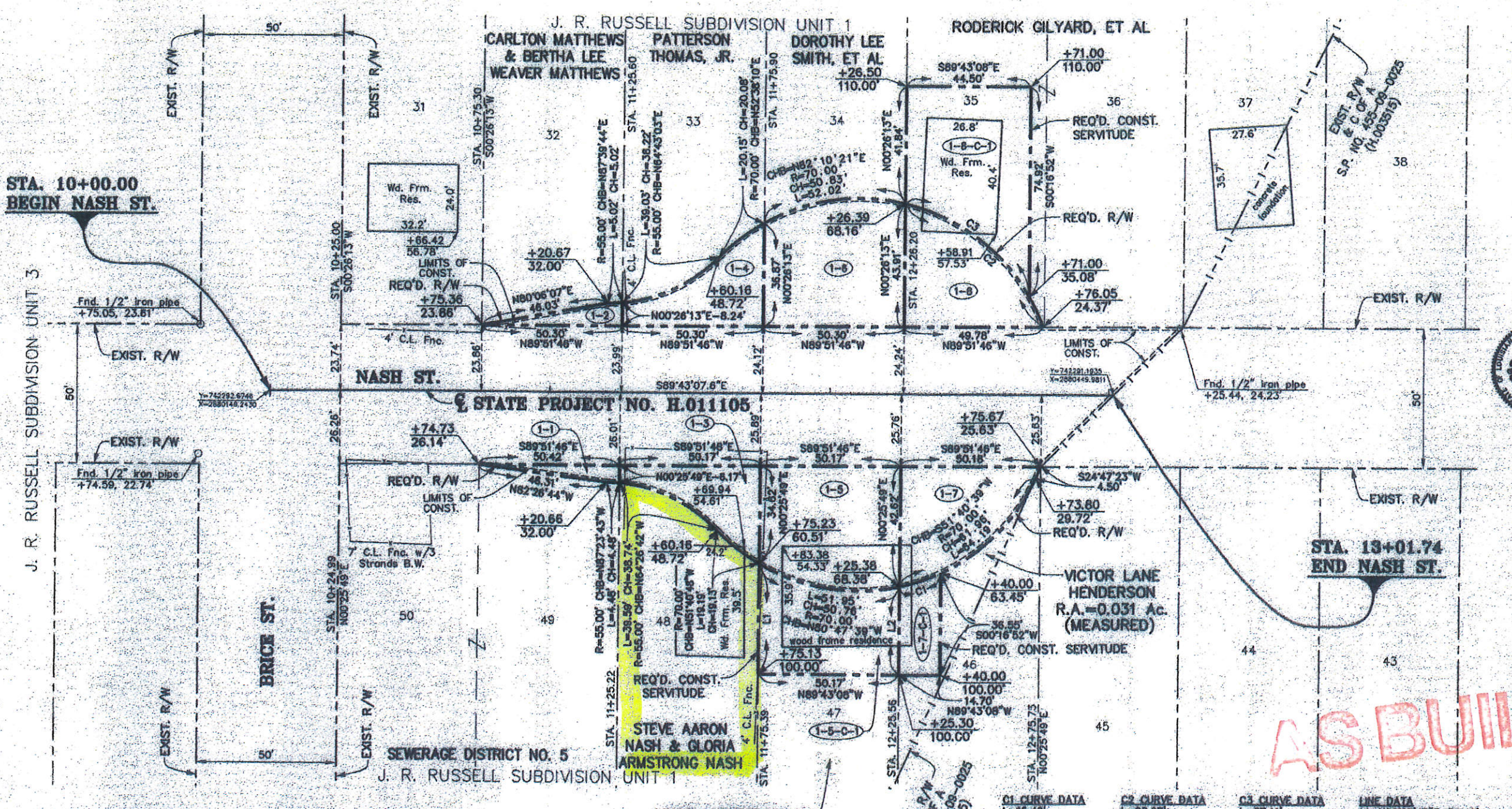
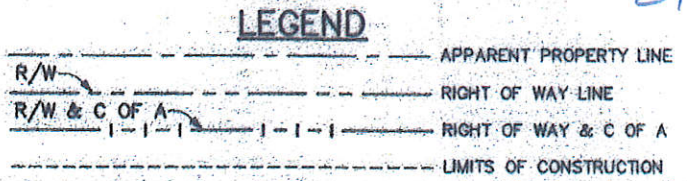


NORTHWESTERN LAND DISTRICT  
T18N-R14W  
SECTION 21



PARCEL	OWNER	ACQUISITION	AREA	
1-8-C-1	RODERICK GILYARD, ET AL	C.O.B. 4159, Pg. 472 C.O.B. 2257, Pg. 50	NOVEMBER 14, 2008 JULY 29, 1985	0.055 Ac.
1-8		C.O.B. 1822, Pg. 650	NOVEMBER 13, 1980	0.034 Ac.
1-7-C-1	VICTOR LANE HENDERSON	C.O.B. 2291, Pg. 496	NOVEMBER 25, 1985	0.011 Ac.
1-7		C.O.B. 2954, Pg. 746	MARCH 11, 1994	0.033 Ac.
1-6	DOROTHY LEE SMITH, ET AL	C.O.B. 4257, Pg. 586 C.O.B. 2954, Pg. 746	AUGUST 17, 2009 MARCH 11, 1994	0.050 Ac.
1-5-C-1	VINSON HENDERSON & LOIS MAE QUARLES HENDERSON	C.O.B. 969, Pg. 735	AUGUST 6, 1982	0.037 Ac.
1-5		C.O.B. 756, Pg. 288	MAY 24, 1955	0.048 Ac.
1-4	PATTERSON THOMAS, JR.	C.O.B. 3370, Pg. 410	FEBRUARY 1, 2000	0.020 Ac.
1-3	STEVE AARON NASH & GLORIA ARMSTRONG NASH	C.O.B. 961, Pg. 81	APRIL 13, 1982	0.005 Ac.
1-2	CARLTON MATTHEWS & BERTHA LEE WEAVER MATTHEWS	C.O.B. 966, Pg. 140 C.O.B. 966, Pg. 138 C.O.B. 948, Pg. 621	JUNE 20, 1962 JUNE 20, 1962 DECEMBER 4, 1981	0.004 Ac.

VINSON HENDERSON & LOIS MAE QUARLES HENDERSON



*Handwritten signature and date:*  
S.P. NO. 455-08-0025 (H.003515)  
2/8/17

- NOTES:**
- ALL PIPES AND MONUMENTS SHOWN HEREON WERE FOUND.
  - THE COORDINATES & BEARINGS SHOWN HEREON ARE BASED ON LOUISIANA STATE PLANE COORDINATE SYSTEM, NORTH ZONE (NAD 83). TO CONVERT TO TRUE BEARINGS USE:  $-00^{\circ}41'13.3''$
  - DISTANCES SHOWN ARE HORIZONTAL GROUND DISTANCES. TO CONVERT DISTANCES DERIVED FROM COORDINATES SHOWN HEREON TO HORIZONTAL GROUND DISTANCES, USE SCALE FACTOR: 1.000027570

**COYLE ENGINEERING CO., INC.**  
BOSSIER CITY, LOUISIANA  
(318) 746-8987

DATE: 12/18/2013  
COMPUTED BY: CGC3  
DRAWN BY: LYS  
SCALE: 1" = 20'  
FILE NO: 02-16-1-062  
RW SHEET NO. 1

RIGHT OF WAY MAP  
STATE PROJECT NO. H.011105  
CUL-DE-SACS @ I-49N C-OF-A LINE  
CADD PARISH MAP

DATE: 12/18/2013  
COMPUTED BY: CGC3  
DRAWN BY: LYS  
SCALE: 1" = 20'  
FILE NO: 02-16-1-062  
RW SHEET NO. 1

DATE: 12/18/2013  
COMPUTED BY: CGC3  
DRAWN BY: LYS  
SCALE: 1" = 20'  
FILE NO: 02-16-1-062  
RW SHEET NO. 1

DATE: 12/18/2013  
COMPUTED BY: CGC3  
DRAWN BY: LYS  
SCALE: 1" = 20'  
FILE NO: 02-16-1-062  
RW SHEET NO. 1